

JOURNAL

SORT BY MONTH

BECOME A CONTRIBUTOR

FOCUS: TING-TONG CHANG SOLO EXHIBITION AT CFCCA, MANCHESTER

06 AUG 2015 BY YIMAN LIN



'Clockwork Dreams' at CFCCA, Manchester

art:icurate artist [Ting-Tong Chang](#) presents his solo **exhibition** 'Clockwork Dreams' at Centre for Chinese Contemporary Art (CFCCA) in Manchester, UK.

In the **exhibition**, [Ting-Tong Chang](#) presents a new body of work investigating the history of automatons in Europe as a means of exploring utopian visions. The word "automaton" is often used to describe self-moving machines, especially those that have been made to resemble human or animal actions. From Jacques de Vaucanson's Digesting Duck (1739) to Andreas Jakob Graf Dietrichstein's Mechanical Theatre (1752), automatons have entertained kings and princess, taught moral lesson to citizens and raise deep philosophical questions. Above all, they are technical sophistication that embodies utopian visions and political dreams.

By creating automatons, [Ting-Tong](#) constructs talking automatons presenting absurd dialogues exploring socio-politically loaded issues, whilst a series of drawings chart a journey through a mythical landscape. Various characters and personalities feature, disclosing their private fates and universal fears: hooligan jaguar warriors, chav tribal wars, council huts, Western Union and NHS shaman.

The **exhibition** opens with the newly commissioned donation box So Far So Good to replace the much loved Pay-as-you-go (2012) currently situated by CFCCA's front desk. Every time a visitor donates a coin, the fish-like automaton will simulate swimming whilst delivering a speech revealing a personal story from life underwater in the Thames River.

The **exhibition** will run until August 16, 2015.

Centre for Chinese Contemporary Art (CFCCA)
We use cookies to improve our website and your experience. By continuing to browse our website you accept our cookie policy. [Learn more.](#)

Thomas Street, Northern Quarter

Manchester, M4 1EU

[Ting-Tong Chang](#) lives and works in London. His works have been exhibited in solo and group shows including Kunst Kraft Werk, Leipzig, Germany (2015), Edinburgh Sculpture Workshop (ESW) (2013-2014), Bristol Biennial' (Bristol, 2014); 'III Moscow International Biennale for Young Art 2012', Moscow Museum of Modern Art (Moscow, 2012); 'European Performance Art Festival', Warsaw Centre for Contemporary Art (Warsaw, 2011); 'Forum Biennial of Taiwanese Contemporary Art', Taipei Contemporary Art Center (Taipei, 2010); '6th Taipei Biennial', Taipei Fine Arts Museum (Taipei, 2008)

LATEST NOTES

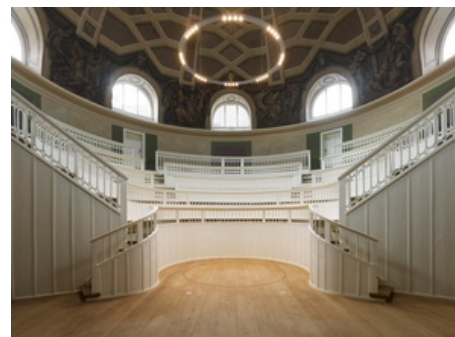


NEW YORK AND THE 7 SINS

art:icurate artist Sylvie Macias Diaz plays the role of Sloth in a group exhibition titled '7 women 7 sins' at Kunstraum, Brooklyn, New York City.

3 DAYS AGO

READ MORE

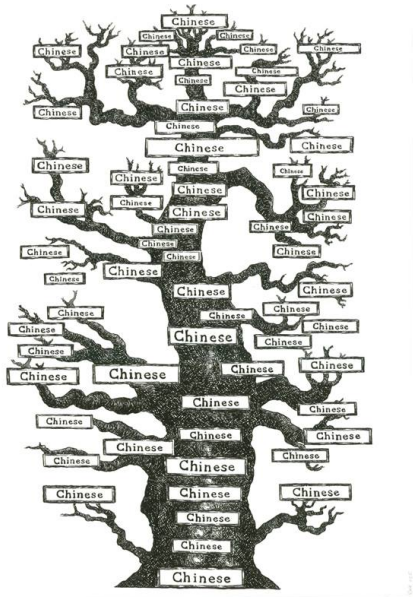


BERLIN ART SCENE: PERFORMANCE BY BENEDETTA PANISSON

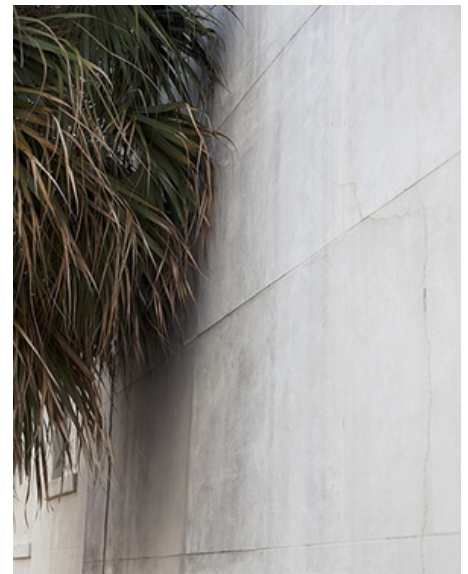
art:icurate artist Benedetta Panisson presents her 'High Tide Siren' performance at Kleine Humboldt Galerie in Berlin.

4 DAYS AGO

READ MORE



Ting-Tong currently has a [crowdfunding campaign](#) up and running. By co-funding his work you become his Co-Producer and not only support his practice but also share a commission on sale with him when his work sells.



"TOGETHER" ART:I:CURATE SECRET NY EXHIBITION

art:i:curate hosted "Together", an intimate exhibition to celebrate the launch of its new patronage and crowdfunding model.

23-THU-2015

[READ MORE](#)

[← PREVIOUS](#)

[NEXT →](#)

COMPANY

- [Our story](#)
- [Careers](#)
- [Press](#)
- [Contact](#)
- [Help](#)
- [Trust & safety](#)
- [Terms](#)
- [Privacy](#)

COMMUNITY

- [Crowdfund](#)
- [Events](#)
- [Journal](#)
- [Partners](#)

BUY AND COLLECT

- [Collections](#)
- [Design objects](#)
- [Limited edition prints](#)
- [Painting](#)
- [Photography](#)
- [Secure payment](#)
- [Worldwide shipping](#)

ARTISTS & DESIGNERS

- [Submit your work](#)
- [Guidebook](#)
- [Artists](#)
- [Designers](#)
- [Suggest artists](#)

JOIN THE CONVERSATION



[INVITE FRIENDS](#)

STAY IN THE LOOP

[SIGN UP](#)